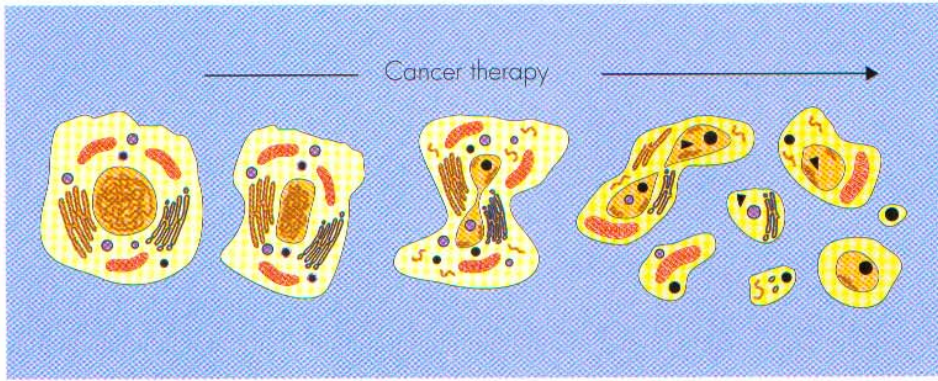


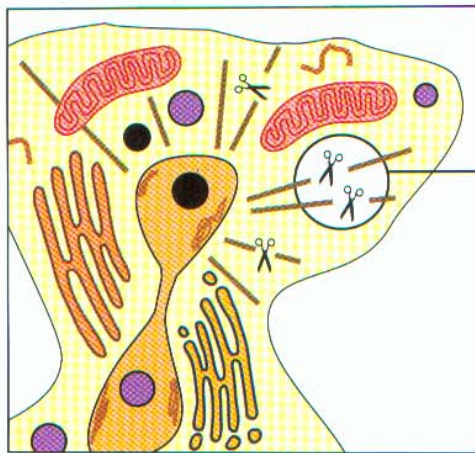
CANCER THERAPY INDUCES APOPTOSIS OF TUMOR CELLS



Apoptosis is an active process, resulting in degradation of cell constituents and fragmentation of the cell.

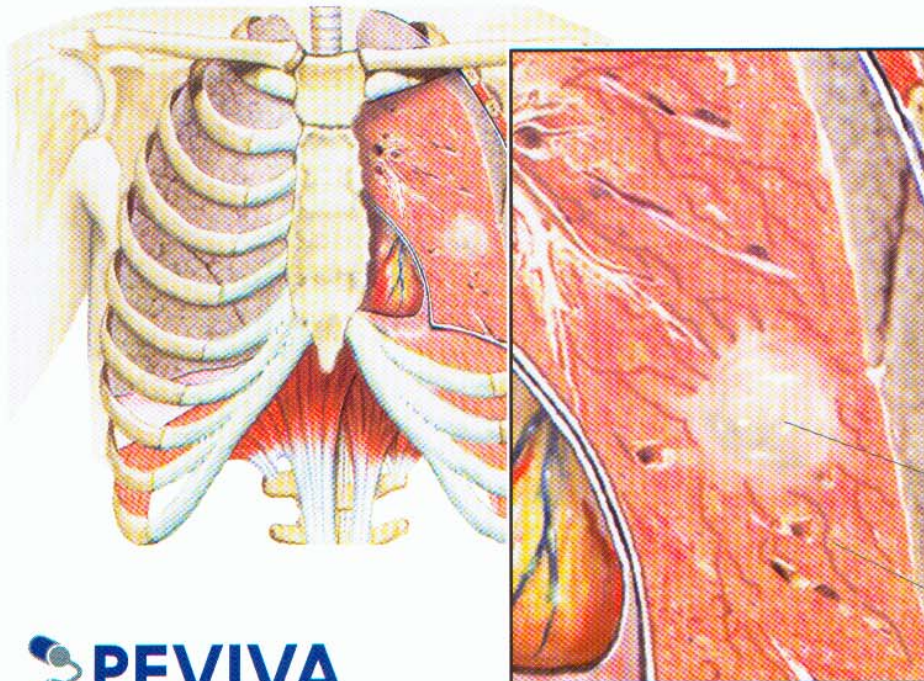
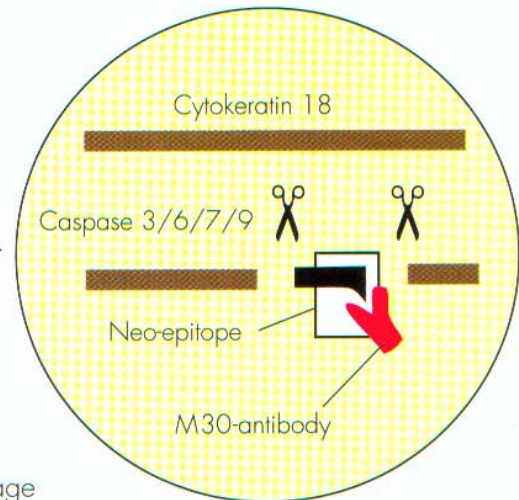
A family of proteases called *caspases* are responsible for a major part of this process.

In epithelial cells, the cytoskeleton is degraded by caspases.



The filament protein cyokeratin 18 is cleaved at two sites.

Antibody M30 recognizes a neo-epitope of cyokeratin 18 which becomes exposed after cleavage by caspases during apoptosis.



Caspase-cleaved cyokeratin 18 fragments are released from tumor cells during apoptosis. Of these fragments, the neo-epitope can be measured in sera from cancer patients by an ELISA-assay based on the M30-antibody.

Tumor

Release of caspase-cleaved cyokeratin 18 fragments into blood.



PEVIVA AB
 Strömkarlsvägen 82, SE-167 62 Bromma/Sweden
 Website: www.peviva.se Email: info@peviva.se
 Telephone: +46 8 80 88 83 Telefax: +46 8 564 626 36

M30-Apoptosense™ ELISA